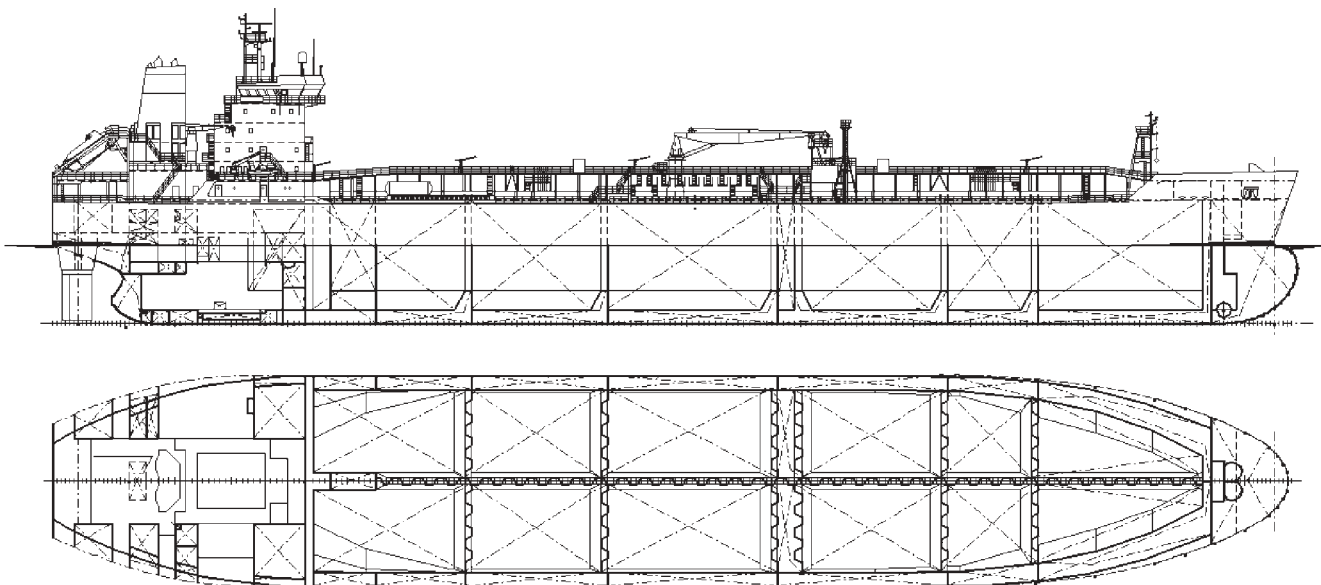


Tanker For Chemicals and Oil Products

35,000 DWT



Name:	m/t MARITEA	Length overall (extreme)	175.870 m
Owner / Flag:	CALISA / Italy	Length between perpendiculars	169.000 m
Builder / Yard:	Shipyards 3. MAJ / 682	Breadth, moulded	29.787 m
Delivered:	2002, 2003	Depth, moulded to upper deck	16.805 m
Sister ship:	Yard 684	Design draught (extreme)	11.018 m
Classification:	RINA 100-A-1.1, Nav IL, Cst (oil-chem), ESP, ⚡ IAI, ⚡ IAP, ⚡ IAQ-1, ⚡ IIQ, MAN, NAU, FTC, RSD, SCC, VCS, EP2, IV, IWS, TMS, P, OWS, PMS,	Deadweight at design draught (11.018 m)	34,659 t
Designed by:	Shipyards 3. MAJ		

Main engine 3. MAJ - SULZER 6 RTA 52 U
 CMCR 9,000 kW at 130 min⁻¹
 Trial speed with 7,620 kW (85% CMCR)
 at design draught 15.30 knots

Capacities (100%):

Cargo tanks (slop included) 43,200 m³
 Ballast tanks 17,018 m³
 Washing water tanks 1,119 m³

Provisions

Heavy fuel oil 1,266 m³
 Diesel oil 191 m³
 Lubrication oil 133 m³
 Fresh water 175 m³

Cargo unloading time abt. 10.5 hours
 Consumption of HFO with 8,120 kW 38 t/day
 Cruising range abt. 10,300 nautical miles

Crew complement 26 + 6 Suez crew

The vessel is double hull tanker for oil products and IMO type 2 tanker for chemicals. Cargo space is divided into six pairs of cargo tanks, one pair of slop tanks and one recovery tank. The structure of cargo tanks is designed for cargo density of 1.025 t/m³ in completely filled tanks and for cargo density up to 1.54 t/m³ in partially filled tanks with filling height corresponding to the density ratio. Double hull consists of six pairs of double bottom / double side water ballast tanks and washing water tanks. Engine room is equipped for unattended operation.

Painting: Cargo tanks - phenolic epoxy
 Ballast tanks - light colour solvent free epoxy

Cargo equipment:

Independent pipeline from one pair of cargo tanks and each slop and recovery tank arranged to cross-over manifold. Stern loading station provided.

Hydraulically driven submerged centrifugal cargo pumps:

- Cargo tanks: 12 x 500 m³/h at 150 mlc
- Slop tanks: 2 x 200 m³/h at 150 mlc
- Recovery tank: 1 x 200 m³/h at 150 mlc
- Portable pump: 1 x 150 m³/h at 80 mlc

Six electrically driven hydraulic power units, each of 435 kW.

Cargo pumps and pipes are of stainless steel AISI 316L.

Cargo, slop and recovery tanks heating with thermal oil and heating coils.

Inert gas generator, capacity 5,000 m³/h.

Fixed tank cleaning machines:

- Cargo tanks No. 2 P&S: 4 x 16.4 m³/h at 9 bar
- Remaining cargo tanks: 20 x 19.1 m³/h at 9 bar
- Slop tanks: 6 x 9.1 m³/h at 9 bar
- Recovery tank: 1 x 17 m³/h at 9 bar

Two tank cleaning pumps, 80 m³/h at 130 mlc.

One electro-hydraulic cargo hose handling crane, 100 kN SWL.

Thermal oil plant:

- Two thermal oil heaters, capacity 5,000 kW each
- One thermal oil economiser, capacity 850 kW

Auxiliary engines plant:

- Three diesel generators sets, 1,280 kW each
- One emergency diesel generator set, 217 kW

