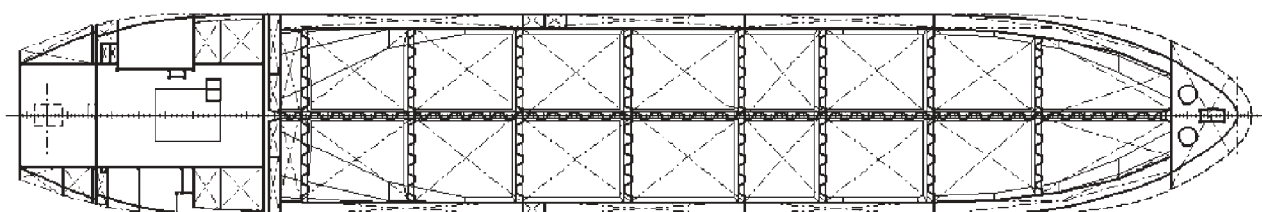
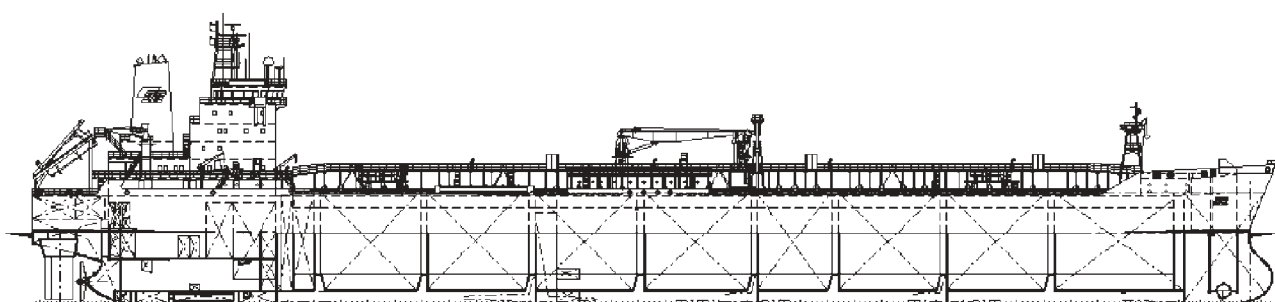


Tanker For Chemicals, Oil and Oil Products

37,000 DWT



Name:	m/t BRO ELIZABETH	Length overall (extreme)	183.97 m
Owner / Flag:	Broström Tankers SA / France	Length between perpendiculars	176.00 m
Builder / Yard:	Shipyards 3. MAJ / 678	Breadth, moulded	30.00 m
Delivered:	2001, 2002	Depth, moulded to upper deck	15.911 m
Sister ship:	Yard 679	Design draught (extreme)	9.016 m
Classification:	BUREAU VERITAS	Deadweight at design draught (9.016 m)	29,616 t
	I 3/3 E ⚡ Oil and Chemical Tanker, F, ESP, DEEP SEA	Scantling draught (extreme)	10.516 m
	IG, OIL POL-ENG, OIL POL-CARG, NLS POL, COW	Deadweight at scantling draught (10.516 m)	37,026 t
	SBT PL CDS, CSA, SPM, ETA, CNC-1		
	⚡ AUT, ⚡ MACH, ⚡ BOILER, VERISTAR		
Designed by:	Shipyards 3. MAJ		

Main engine	3. MAJ - SULZER 6 RTA 52 U
CMCR	7,900 kW at 120 min ⁻¹
Trial speed with 6,715 kW (85% CMCR) at design draught	15.25 knots

Capacities (100%):

Cargo tanks (slop included)	43,259 m ³
Residual tanks	239 m ³
Ballast tanks	18,185 m ³
Washing water tanks	263 m ³

Provisions

Heavy fuel oil	1,485 m ³
Diesel oil	199 m ³
Lubrication oil	97 m ³
Fresh water	224 m ³

Cargo unloading time	abt. 10.5 hours
Consumption of HFO	29.7 t/day
Cruising range	abt. 14,800 nautical miles
Crew complement	26 crew + 1 pilot + 6 Suez crew

The vessel is double hull tanker for oil and oil products and IMO type 2 tanker for chemicals. Cargo space is divided into eight pairs of cargo tanks, one pair of slop tanks and one pair of residual tanks. The structure of cargo tanks is designed for cargo density of 1.025 t/m³ in completely filled tanks and for cargo density up to 1.54 t/m³ in partially filled tanks with filling height corresponding to the density ratio, including zig-zag and asymmetrical loading.

Double hull consists of four pairs of double bottom and four pairs of double side water ballast tanks. Engine room is equipped for unattended operation.

Painting: Cargo tanks - phenolic epoxy
 Ballast tanks - light colour epoxy
 Underwater shell - SPC antifouling

Cargo equipment:

Independent pipeline from each pairs of cargo tanks and one pair of slop tanks arranged to cross-over manifold.

Hydraulically driven submerged centrifugal cargo pumps:

- Cargo tanks: 16 x 500 m³/h at 135 mlc
- Slop tanks: 2 x 300 m³/h at 135 mlc
- Residual tanks: 2 x 80 m³/h at 120 mlc
- Portable pump: 1 x 150 m³/h at 70 mlc

One diesel engine driven power unit of 463 kW and four electrically driven hydraulic power units, each of 447 kW.

Cargo pumps and pipes are of stainless steel AISI 316.

Cargo tanks heating with deck heaters. Slop and residual tanks heating with heating coils.

Inert gas generator, capacity 5,000 m³/h and nitrogen generator, capacity 100 m³/h.

Fixed tank cleaning machines:

- Cargo tanks: 32 x 31 m³/h at 8 bar
- Slop tanks: 4 x 17.5 m³/h at 8 bar.

One tank cleaning pump, 200 m³/h at 120 mlc.

One electro- hydraulic cargo hose handling crane, 100 kN SWL.

Steam plant:

- One oil fired boiler, steam capacity 16 t/h at 8 bar
- One composite boiler, steam capacity 1.2 t/h (exhaust gas section) and 1.5 t/h (oil fired section) at 8 bar

Auxiliary engines plant:

- Two diesel generators sets, 780 kW each
- One diesel generator set, 1,280 kW
- One emergency diesel generator set, 217 kW

