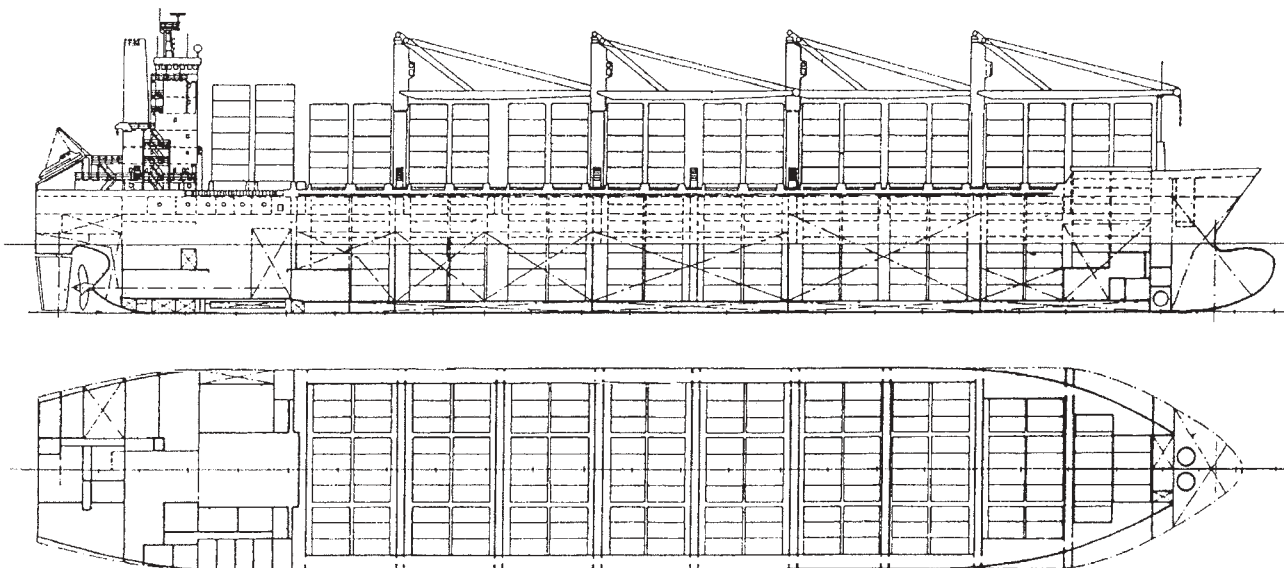


Container Vessel

2,259 TEU



Name:	m/s ZRIN	Lenght over all	201.41 m
Owner / Flag:	Kaiser Navigation Corp. / Liberia	Length btw perp.	189.00 m
Builder / Yard:	Shipyard 3.MAJ / 665	Breadth moulded	32.24 m
Sister vessels:	664, 666	Depth moulded	18.69 m
Delivered:	1994	Draught design	11.02 m
Classification:	BV; I 3/3 E, ⚓ Container Ship, Deep Sea, AUT, PORT	Draught scantling	11.82 m
Designed by:	Shipyard 3.MAJ	Deadweight, at draught of 11.0 m	30,887 t
		Deadweight, at draught of 11.8 m	35,071 t

Main engine: 3.MAJ - SULZER 6 RTA 72
MCR: 16,440 kW / 94 rpm
Trial speed, 85% MCR at draught of 11.02 m 19.33 knots

Capacities:

Containers (20' x 8' x 8'6''):holds	1,018 TEU
hatch covers upper deck	1,241 TEU
Total	2,259 TEU

Provisions:

Heavy fuel oil	3,333 m ³
Diesel fuel oil	222 m ³
Lubrication oil	159 m ³
Fresh water	445 m ³

Ballast water	10,762 m ³
HFO consumption of M.E.	56.3 t / 24 hours
Crew complement	30
Reefer sockets:	138 reefer sockets in hold No. 3 and 162 reefer sockets on deck

The vessel is designed for world wide service as container vessel suitable to carry standard and reefer containers in holds and on upper deck.

The vessel is designed for transportation of ISO standard containers of 20' x 8' x 8'6" or 40' x 8' x 8'6".

Cargo equipment:

- Hatch covers:

Nos. 1 & 2	central	13.40 x 10.70 m
	side	13.40 x 5.54 m
Nos. 3, 4 & 5	central	13.40 x 10.70 m
	side	13.40 x 8.29 m
- Four electro-hydraulic single deck cranes of 392 kN SWL at 32 m.

Container lashing:

- Fixed cellular guides.
- Removable cellular guides for 20' cont.
- Fixed lashing equipment on hatches.

Steam plant:

- One vertical fired boiler, 7 bar, cap. 2 t/h steam.
- One exhaust gas economizer, 7 bar, cap. 2 t/h steam.

Auxiliary engines plant:

- Four el. gen. sets, 60 cycles, 1,350 kVA D.M.driven each.
- One emergency el. generator / 60 cycles, 220 kVA, D.M. driven.

