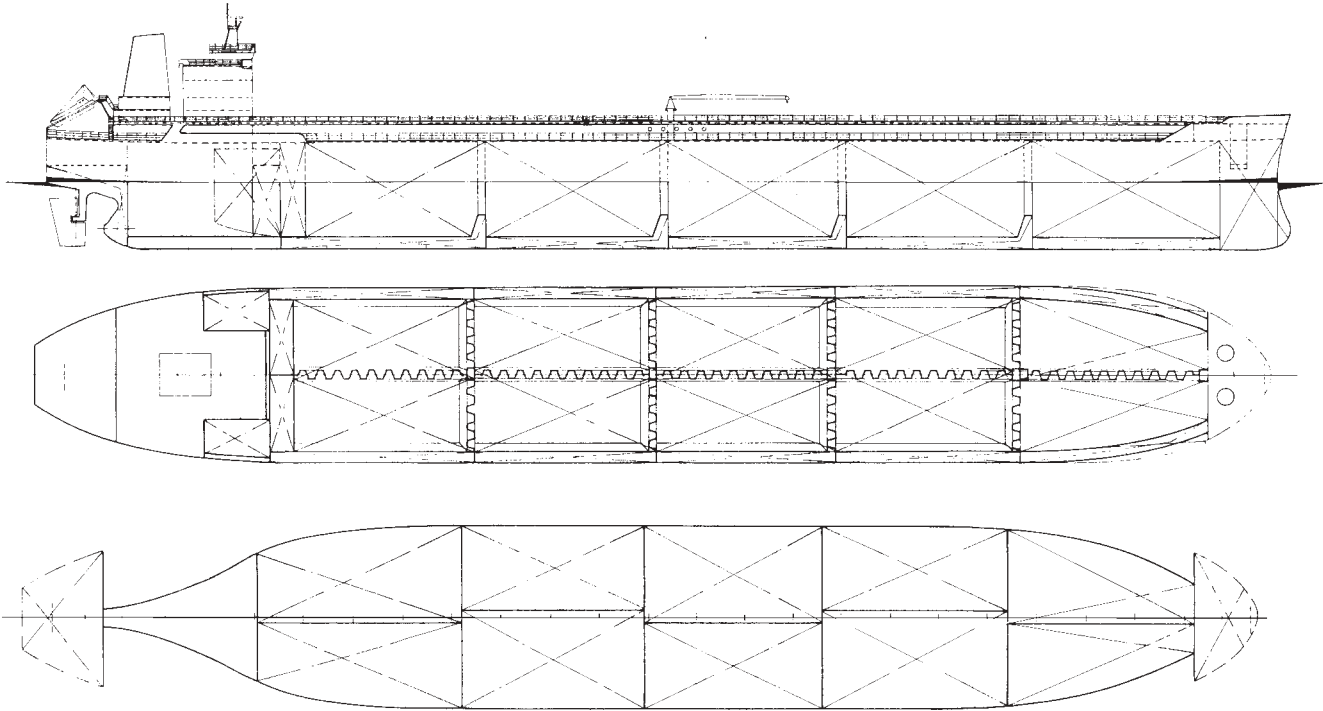


Oil Tanker

70,700 / 60,300 DWT



Name: m/s **MARGARA**
 Designed by: Shipyard 3.MAJ
 Builder / Yard: **Shipyard 3.MAJ / 662**
 Sister Vessels: 663, 673, 674
 Delivered: 1999, 2000, 2001
 Owner / Flag: Doria Shipping Co. Ltd. / Malta
 Classification: ABS ⇨ A1 (E) Oil Carrier, SH,
 ⇨ AMS, ⇨ ACCU, Ice Class IC

Length over all abt. 228.20 m
 Length btw perp. 220.00 m
 Breadth moulded 32.20 m
 Depth moulded 20.10 m
 Draught design 12.55 m
 Draught scantling 14.10 m
 Deadweight at design draught abt. 60,300 t
 Deadweight at scantling draught abt. 70,700 t

Main engine:
 3. MAJ - SULZER
 Trial speed at 9,800 kW and
 design draught
 6 RTA 62U
 abt. 15.00 knots

Capacities:
 Cargo tanks including slop tanks (98% full) abt. 80,400 m³

Provisions

Heavy fuel oil	abt. 2,670 t
Diesel oil	abt. 220 t
Light diesel oil	abt. 17 t
Lub. oil	abt. 115 t
Fresh water	abt. 160 t
Feed water	abt. 70 t

Water ballast abt. 30,600 t
 Crew complement: 27+6 Suez crew

Cargo space with longitudinal bulkhead consisting of 10 cargo tanks (5 pairs, P&S) and 2 slop tanks. The entire cargo tank length protected by double hull (double bottom and double side) forming water ballast tanks.
 Additional pollution prevention measures comprising inner bottom/double side for fuel oil tanks.
 Material protection: cargo tanks protected with epoxy painting system.

Cargo equipment:

- Piping and pump system arranged for 5 segregations and one pair of slop tanks
- One hydraulically driven submerged cargo pump fitted in each cargo/slop tank, capacity abt. 900 m³/h / 300 m³/h respectively at 130 mlc, density 0.8 t/m³
- Hydraulic power units (four electric and three diesel engine driven) for simultaneous discharging of 5400 m³/h of cargo at 130 mlc, density 0.8 t/m³
- Inert gas plant 6750 m³/h

Steam plant:

- Two oil fired boilers, steam capacity abt. 14 t/h at 8 bar each
- One exhaust gas/oil fired composite boiler capacity abt. 1.5/2.0 t/h at 8 bar

Auxiliary engines plant:

- Three diesel generator sets of abt. 1100 kVA, 3 x 450 V, 60 Hz, 900 min-1 burning DO and HFO
- One emergency diesel generator set of abt. 150 kVA, 3 x 450 V, 60 Hz.

