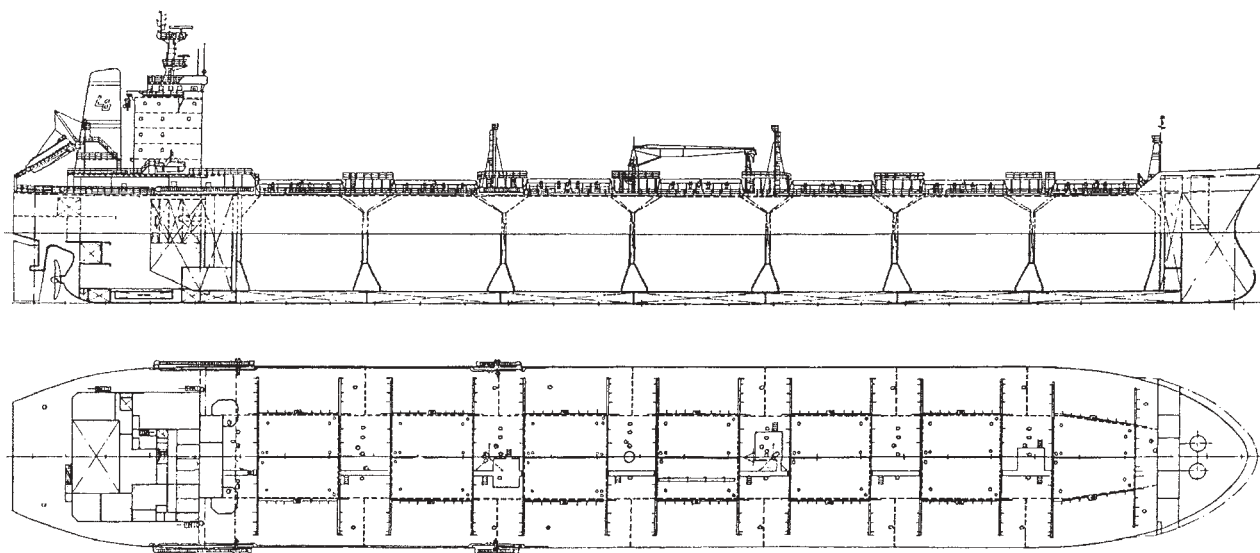


Obo Carrier

64,850 DWT



Name:	m/s MARA LOLLI-GHETTI	Lenght over all	224.60 m
Owner / Flag:	Garden Gate Shipping Co. / Liberia	Length btw perp.	216.00 m
Builder / Yard:	Shipyards 3.MAJ / 651	Breadth moulded	32.20 m
Sister vessel:	638	Depth moulded	19.35 m
Delivered:	1989	Draught on summer freeboard	13.37 m
Classification:	ABS; ⚡ A1 E, Bulk/oil Carrier, ⚡ AMS, ⚡ ACCU, COW, IGS, Strengthened for heavy cargoes, Holds 2, 4 and 6 may be empty	Deadweight at draught 13.37 m	64,850 t
Designed by:	Shipyards 3.MAJ	Gross tonnage	39,836

Main engine: 3.MAJ - SULZER 7 RTA 62
MCR: 8,760 kW / 86 rpm
Trial speed, 100% MCR at draught 12.619 m 14.87 knots

Capacities:

Liquid cargo, slop tanks included (100%) 72,490 m³
Slop tanks (100%) 1,462 m³

Provisions:

Heavy fuel oil (98%) 2,396 m³
Diesel fuel oil (98%) 209 m³
Lubrication oil (98%) 129 m³
Fresh water (98%) 243 m³

Ballast water 30,709 m³
Liquid cargo loading/unloading time: abt. 15 hours
HFO consumption of M.E. (85% MCR): 29.8 tons/24 hours
Cruising Range (speed 13.8 kn, 2,000 t HFO) 22,000 n.m.
Crew complement 33

m/s MARA LOLLI-GHETTI is designed and built for world wide service suitable to carry bulk cargoes (coal, grain) in all cargo tanks/holds, ore in alternative tanks/holds and also crude oil (densities of not over 1,025 and flash point below 60 deg. C) and oil products in all cargo tanks/holds and 2 slop tanks. The cargo piping is arranged for loading/unloading of two different liquid cargoes simultaneously.

Cargo equipment:

- Pumps: total discharging rate of cargo is 5,000 m³/h at 12 bar head for density of 1,025 t/ m³
- Stripping: 2 x centrifugal selfpriming type pumps, el. driven, cap. 200 m³/h at 12 bar head.
- Ballast pumps: 2 x centrifugal cap. 1,500 m³/h at 3.5 bar each.
- Heating: steam 10 bar, capacity 44 deg. C - 66 deg. C/96 hours at ambient: sea w. 5 deg. C, air temp. 2 deg. C
- Inert gas system: comb. exhaust gas/inert gasgenerating system, cap. 6,750 m³/h.
- Control: remote and centralized system from control room.
- Measuring and warning: level-temp.-press.-gas, remote and centralized system
- Washing: hot and cold sea water and crude oil system; pump cap. 280 m³/h at 12 bar; s.w. heater cap. 280 m³/h.
- Hatch covers: side rolling, hydr. operated, water/ oil tight type
- Lifting crane for cargo hoses handling: 1 x cap. 150 kN SWL, 360 deg. slewing, hydr. driven.

Steam plant:

- Two boilers oil fired, 16 bar, cap. 16 t/h steam each.
- One comp. boiler, 8 bar, cap. 2.5 t/h steam oil fired + 1.3 t/h steam exh. gas heated section.

Auxiliary engines plant:

- Three el. gen. sets, 60 cycles, 1,005 kVA, D.M. driven each.
- One emergency generator, 60 cycles, 150 kVA, D.M. driven.

