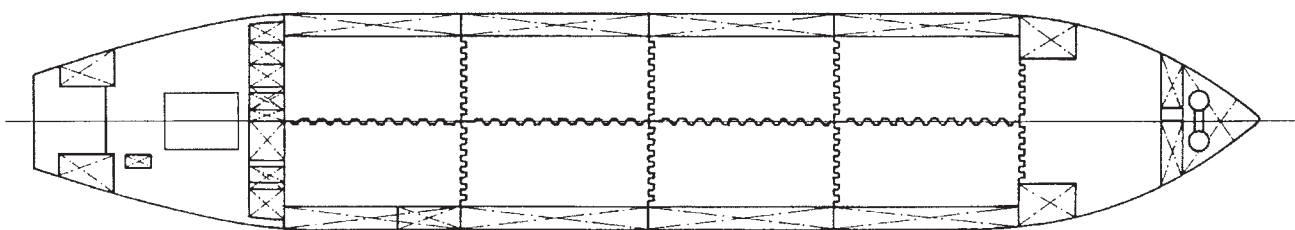
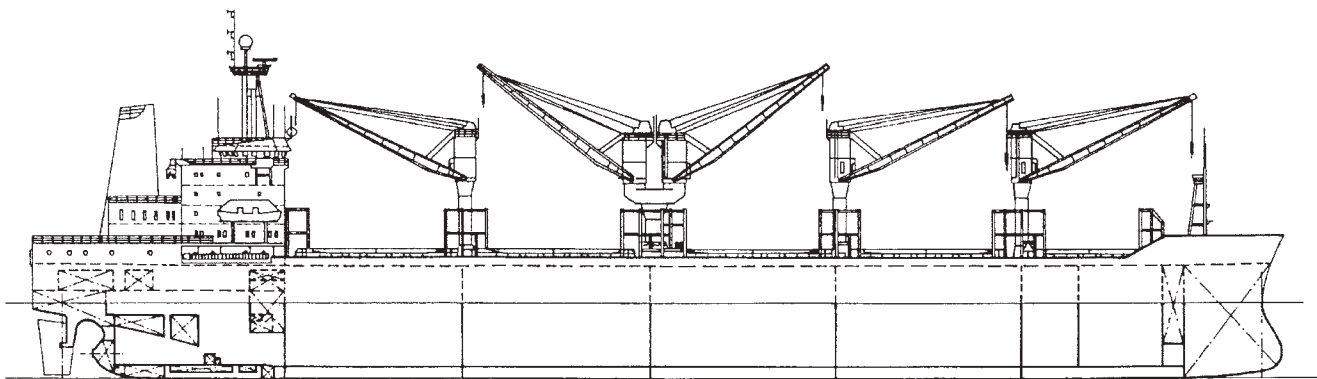


Log/Bulk/Container Carrier

33,520 / 24,350 DWT



Name:	m/s ADELIN DELMAS	Length over all	176.29 m
Owner / Flag:	Societe Navale et Commerciale Delmas	Length btw perp.	169.00 m
	Vieljeux / France	Breadth moulded	30.00 m
Builder / Yard:	Shipyards 3.MAJ / 636	Depth moulded	15.80 m
Sister vessel:	637	Draught design	8.52 m
Delivered:	1986	Draught scantling	10.52 m
Classification:	BV; I 3/3 E, Bulk Carrier, Deep Sea, AUT, PORT	Deadweight, at draught 8.52 m	24,350 t
Designed by:	Shipyards 3.MAJ	Deadweight, at draught 10.52 m	33,520 t
		Gross tonnage	23,275

Main engine: 3.MAJ - SULZER 6 RTA 58
MCR: 6,000 kW / 98 rpm
Trial speed, 90% MCR at draught 10.52 m 14.24 knots

Capacities:

Dry cargo (grain) 41,725 m³
Containers (20' x 8' x 8'6"):
holds 510 TEU
hatch covers and upper deck 396 TEU
Total 906 TEU

Provisions:

Heavy fuel oil 1,127 m³
Intermediate fuel oil 167 m³
Diesel fuel oil 169 m³
Lubrication Oil 77 m³
Fresh water 522 m³

Ballast water 17,190 m³
HFO consumption of M.E. 21.9 t / 24 hours
Crew complement 30

m/s Adeline Delmas is suitable for carriage of grain cargo, logs in holds and on deck and containers in holds and on deck.

Longitudinal centerline bulkhead divides hold No. 2, 3, 4 and 5 into two parts port & starboard.

The hull structure is dimensioned to the following permissible loading:

- Uniformly distributed load
Upper deck 34.3 kN/m²
Double bottom 123.0 kN/m²
- Point loads
Upper deck (hatch covers) 20' con. 176.5 kN/m²
40' con. 220.6 kN
Double bottom 20' con. 245.2 kN/m²
40' con. 367.7 kN

Cargo equipment:

- Hatch covers: watertight, folding type hydraulically operated
No. 1 (P & S) 12,125 x 7,620 m
No. 2, 3, 4 & 5 (P & S) 19,125 x 10,740 m

Deck cranes:

- Three single deck cranes of 245 kN SWL each.
- One twin deck crane of 2 x 245 kN SWL.

Steam plant:

- One vertical fired boiler, 7 bar, cap. 1,6 t/h steam.
- Two exhaust gas economizers, 7 bar, cap. 1.4 t/h both.

Auxiliary engines plant:

- Three el. gen. sets, 60 cycles, 950 kVA D.M. driven each.
- One emergency el. generator, 60 cycles, 150 kVA, D.M. driven.

