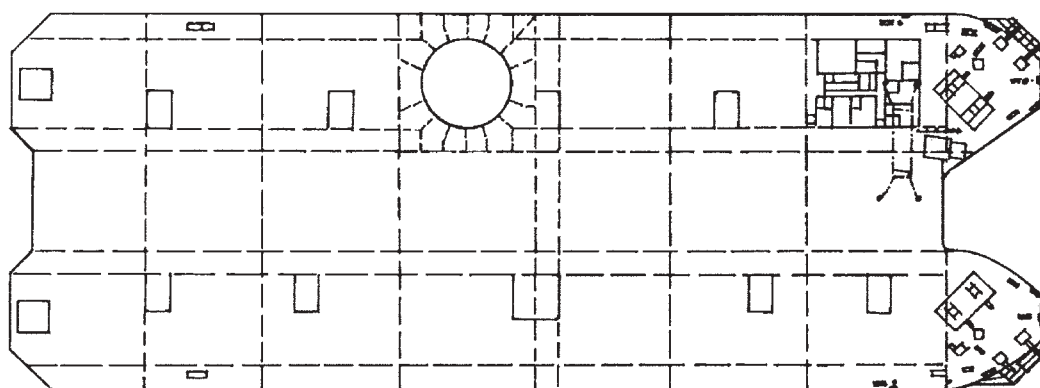
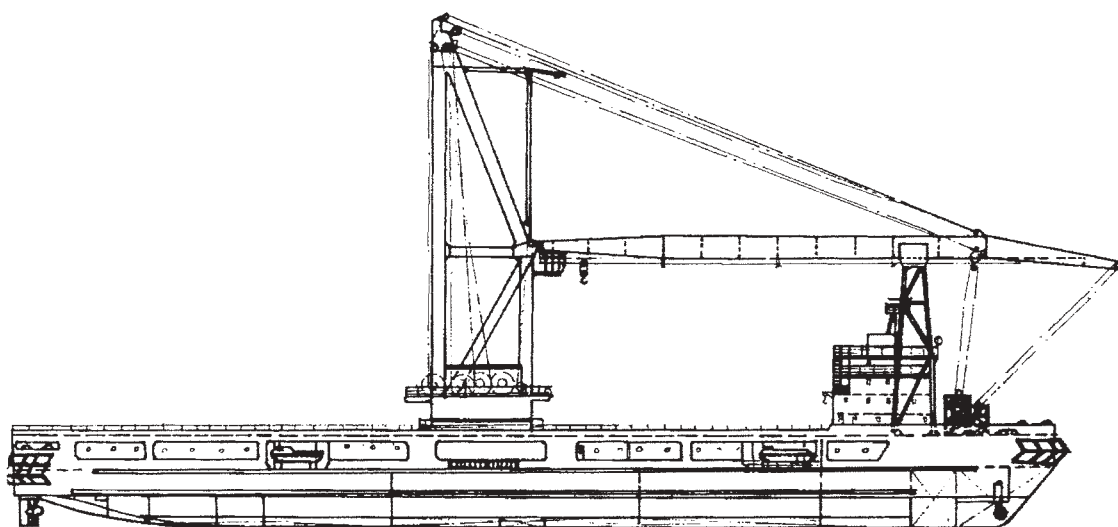


Catamaran Crane Ship

12,000 KN



Name:	m/s ISPOLIN	Lenght over all	148.70 m
Owner / Flag:	Sudoimport / USSR	Length btw perp	130.00 m
Builder / Yard:	Shipyards 3.MAJ / 617	Breadth maximum	50.00 m
Delivered:	1989	Depth moulded	12.00 m
Designed by:	Shipyards 3.MAJ	Draught design	4.35 m
Classification:	USSR Register KM H 3 2 I	Deadweight, at draught 4.35 m	3,900 t
	A2 - Special Crane Ship	Gross tonnage	17,500

Propulsion electric motors MCR	2 x 1,600 kW
Electricity generation diesel power plant	4 x 2,000 kW
Trial speed	11 knots

Safety work weather conditions:

- wind	12 m/sec
- waves h 3% =	2,0 m
Cargo deck area	5,400 m ²
Permitted deck load	50 kN/ m ²
Cruising range	8,500 n.m.
Crew complement	120

Crane

Main hook capacity	2 x 6,000 kN
Aux. hook No. 1 capacity	3,000 kN
Aux. hook No. 2 capacity	300 kN
Main hook outreach (outboard)	30 m
Aux. hook No. 1 outreach (outboard)	50 m
Main hook lifting height	80 m
Aux. hook No. 1 lifting height	66 m
Main hook hoisting speed	3 m/min
Aux. hook No. 1 hoisting speed	6 m/min
Slewing speed	0.2 rpm

The slewing crane of 12,000 kN (abt. 1,220 tons) SWL capacity fitted on catamaran hull vessel is the world's highest capacity crane vessel of such type.

The crane unit is intended for shipment and loading / unloading of heavy offshore structural parts for instance: jackets, foundations etc., as well as for a number of offshore operations and erection of various marine technology units at sea. This huge crane vessel is delivered as a kit set and mounted at the destination indicated by the owner.

