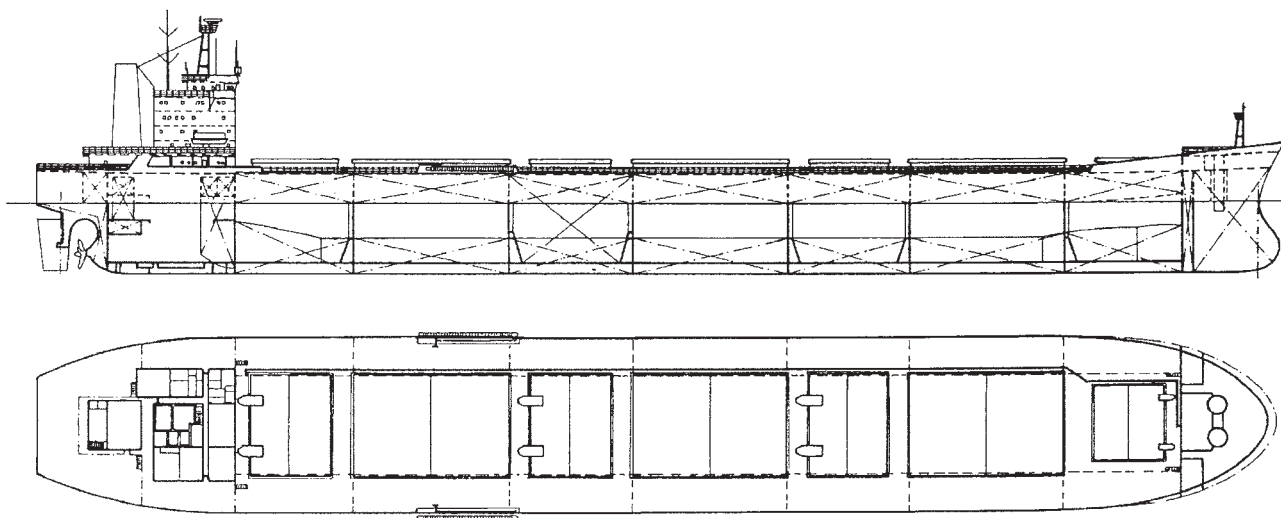


Bulk / Container Carrier

70,940 / 66,490 DWT



Name:	m/s CAST CARIBOU	Length over all	233.93 m
Owner / Flag:	Cast Container Ship Ltd. / Barbados	Length btw perp.	225.00 m
Builder / Yard:	Shipyards 3.MAJ / 604	Breadth moulded	32.20 m
Sister vessels:	605, 619, 621	Depth moulded	18.59 m
Delivered:	1982, 1983, 1984	Draught design	12.83 m
Classification:	DNV; \pm 1A1, Bulk/Container Carrier, EO, Ice Class C, HC, with notation: Holds 2, 4, 6 may be empty	Draught scantling	13.48 m
Designed by:	Shipyards 3.MAJ	Deadweight, at draught 12.83 m	66,490 t
		Deadweight, at draught 13.48 m	70,940 t
		Gross tonnage	40,003

Main engine: 3.MAJ - SULZER 4 RLA 90
MCR: 10,000 kW / 90 rpm
Trial speed, at draught 12.83 m and 9,000 kW 14.85 knots

Capacities:

Cargo holds capacities (grain) 84,895 m³
Container (20' x 8' x 8'6"):
holds (2, 4, 6) 861 TEU
hatch covers and upper deck 605 TEU
Total 1,466 TEU

Provisions:

Heavy fuel oil 2,029 m³
Diesel fuel oil 262 m³
Lubrication oil 104 m³
Fresh water 483 m³

Ballast water 35,441 m³
HFO consumption of M.E. 44 t / 24 hours
Crew complement 36

The vessel is designed for unrestricted class notation suitable to carry grain cargo, ore cargo and containers in holds and on upper deck.

Propelling machinery, accommodation for a complement of 36 persons and navigation spaces are located aft. The hull is divided into seven cargo holds, hull structure laid out for heavy cargoes, such as ore and in holds No. 2, 4, 6 containers.

Cargo equipment:

Hatch covers:

No. 1 12,438 x 13,460 m
No. 2, 4 & 6 29,038 x 18,480 m
No. 3, 5 & 7 14,938 x 18,480 m

Covers on hatches No. 1, 3, 5 & 7 folding type
Covers on the hatches No. 2, 4 & 6 piggy back type.

Steam plant:

- One boiler, oil fired, 6.5 bar, cap. 2 t/h steam.
- One exhaust gas boiler, 6.5 bar, cap. 1.5 t/h steam.

Auxiliary engines plant:

- Two el. gen. sets, 60 cycles, 600 kVA D.M. driven each.
- One el. gen. set, 60 cycles, 360 kVA D.M. driven.
- One emergency generator / 60 cycles, 150 kVA, D.M. driven.

