

Tanker For Oil Products and Chemicals

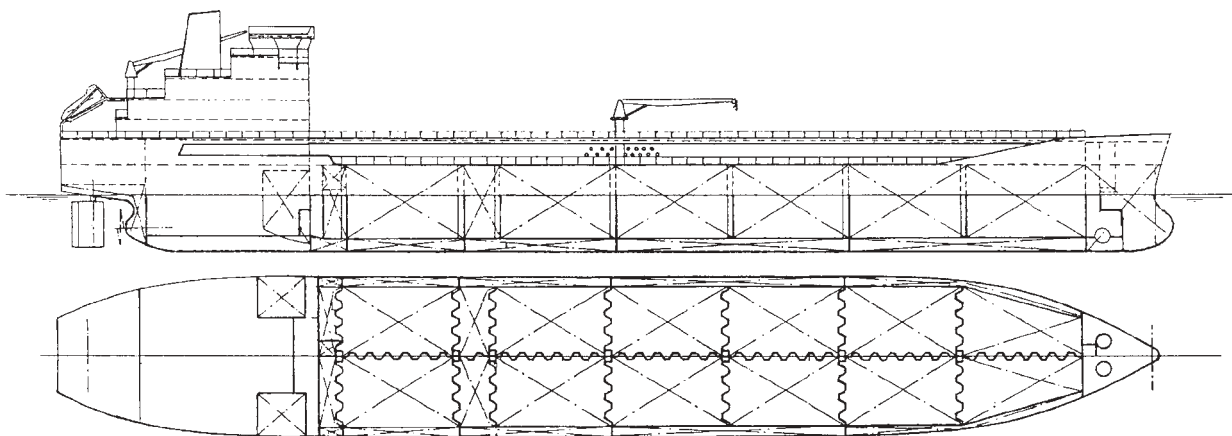
13,000 / 12,000 DWT

Designed by: Shipyard 3. MAJ
 Project No. 2707
 Classification: Germanischer Lloyd ✚ 100 A5, E3, Oil Tanker,
 Chemical Tanker - TYPE 2 ✚ MC, E3, AUT, IW,
 NAV-0

Length over all	abt. 144.00 m
Lenth btw perp.	138.00 m
Breadth moulded	21.00 m
Depth moulded	11.10 m
Draught design	7.50 m
Draught scantling	7.90 m
Deadweight at design draught	abt. 12,000 t
Deadweight at scantling draught	abt. 13,000 t
Main engine 3. MAJ - SULZER	6 RTA 48
CMCR:	5500 kW/136 rpm
Trial speed at design draught and for propulsion	4,400 kW abt. 15 knots

Capacities:

Cargo tanks (incl. slop tanks)	abt. 16,250 m ³
Water ballast	abt. 6,000 m ³



Provisions:

Heavy fuel oil	abt. 560 m ³
Diesel oil	abt. 150 m ³
Fresh water	abt. 120 m ³
Fresh water (cleaning)	abt. 200 m ³

Crew complement: 22+4 Suez crew

The vessel shall be double hull tanker for oil products and chemicals of IMO type 2 and 3, density not over 1.55 t/m³, including UREA /Ammonium nitrate solution (containing aqua ammonia), in accordance with vessel/protective system capabilities.

Cargo equipment:

- Cargo oil tanks protected with painting system resistant to wide range of acids, bases, solvents and salt water (siloxirane polymer resin or similar).
- Pipes and fitting in contact with cargo made of stainless steel.
- Piping and pumps system arranged for 14 segregated cargo grades and for one pair of slop tanks.

- One hydraulically driven submerged cargo pump fitted in each tank, capacity abt. 350 m³/h (cargo tanks) respectively 110 m³/h (slop tanks) at 110 mLC, density 0.8 t/m³.
- Hydraulic power units for simultaneous discharging of 2800 m³/h of cargo at 110 mLC, density 0.8 t/m³.
- Inert gas generator 3500 m³/h.

Steam plant:

- One oil fired boiler 10 t/h
- One oil fired/exhaust gas composite boiler 1.5/1.0 t/h
- One steam generator for cargo heating.

Auxiliary engines plant:

- Three diesel generator sets of abt. 870 kVA, 3 x 450 V, 60 Hz, 900 min⁻¹ burning DO.
- One PTO generator of abt. 1,600 kVA, 3 x 450 V, 60 Hz.
- One emergency diesel generator of abt. 150 kVA, 3 x 450 V, 60 Hz.