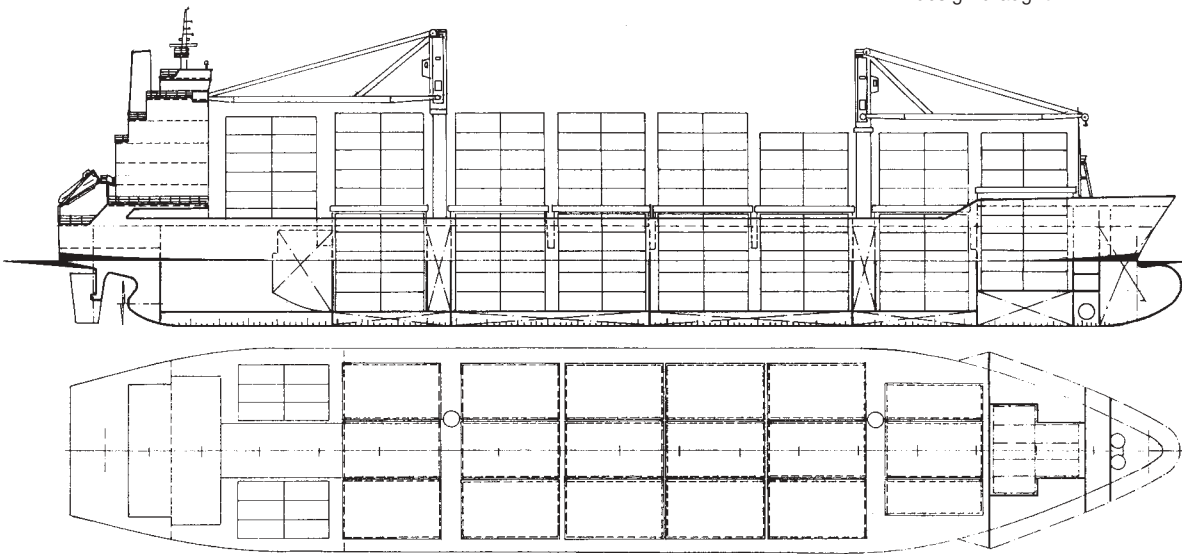


Container Ship

1,270 TEU

Designed by: Shipyard 3.MAJ
 Project No. 2698
 Classification: LRS ⚓ 100 A1 Container Ship ⚓ LMC, UMS.
 or equivalent Classification Society & Class - Liberian
 flag or equivalent

Length over all abt. 150.00 m
 Length btw perp. 140.00 m
 Breadth moulded 27.20 m
 Depth to upper deck 13.60 m
 Draught design 8.75 m
 Deadweight at design draught abt. 15,600 t
 Main engine: 3. MAJ - SULZER 6 RTA 62U
 CMCR: 13320 kW/113 rpm.
 Trial speed at 11,990 kW (90% CMCR),
 design draught abt. 19.10 knots



Capacities:

- TEU (geometric capacity): abt. 1,270 pcs
- capability for FEU units above engine room and on hatch covers of holds nos 3 & 5
- Sockets for reefer units: abt. 100 pcs FEU on upper deck
- Stability: abt. 860 TEU homogeneously loaded, 14 t/TEU

Provisions:

Tanks capacity (100% volume):

Heavy fuel oil	abt. 1,400 m ³
Diesel oil	abt. 140 m ³
Lubricating oil	abt. 55 m ³
Fresh water	abt. 100 m ³
Ballast water	abt. 7,200 m ³
Crew complement	27+6 Suez crew

Container ship designed for unrestricted ocean going service. Dangerous goods in closed freight containers class 2 in hold no. 1, class 3 in hold no. 3, classes 2, 3, 4, 5.1, 6.1 and 8 on forward part of weather deck according to ship capabilities.

Cargo equipment:

Cargo hatch covers:

- Upper deck and forecastle deck: pontoon type, lift away type handled by cranes, non-sequential openings
- stack loading of 60/90 t for TEU/FEU

Container guides:

- Container cell guides for 40 FEU containers fitted in cargo holds.

Deck cranes:

- Two container single jib slewing deck cranes with lifting capacities of 392 kN SWL at 32 m.

Steam plant:

- One composite boiler, capacity 2,000 kg/h for oil fired and 1,700 kg/h for exhaust gas section of saturated steam at 6.5 bar.

Auxiliary engines plant:

- Three diesel generator sets, each abt. 1,100 kVA, 3 x 440 V, 60 Hz, 900 min⁻¹, burning HFO.