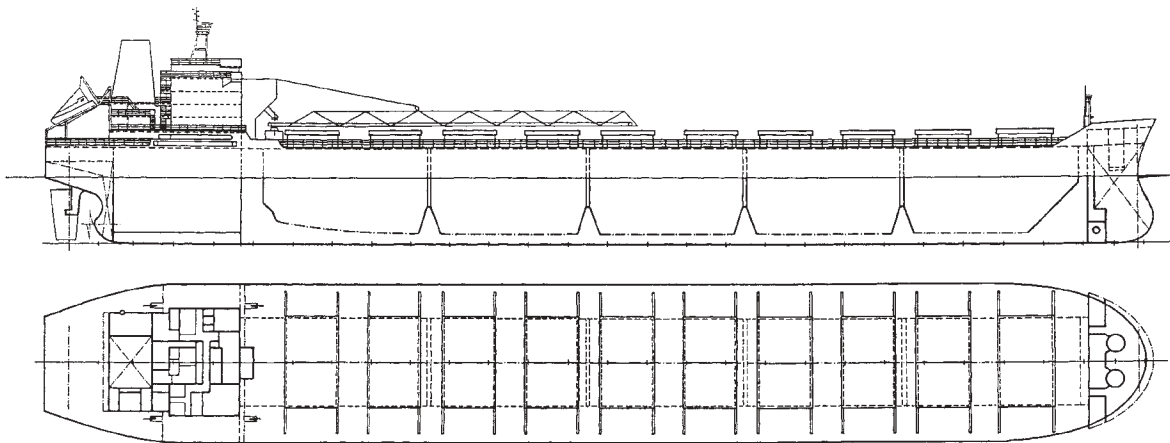


Self Unloading Bulk Carrier

67,500 DWT

Designed by: Shipyard 3.MAJ
 Project No.: 2625
 Classification: LRS; ⚡ 100A1, BULK CARRIER, Holds Nos. 2 and 4 may be empty, ⚡ LMC, UMS

Length over all 227.40 m
 Length btw perp 221.40 m
 Breadth moulded 32.00 m
 Depth moulded 19.20 m
 Draught design 13.35 m
 Draught scantling 13.50 m
 Deadweight, at draught of 13.35 m 67,500 t
 Main engine: 3.MAJ - SULZER 6 RTA 62
 SMCR 12,300 kW / 113 rpm
 Trial speed, 90% CMCR, design draught 14.50 knots



Capacities:

Total cargo capacity 67,300 m³

Provisions:

Heavy fuel oil 2,260 m³
 Diesel fuel oil 200 m³
 Lubrication oil 70 m³
 Fresh water 400 m³

Ballast water 35,000 m³
 HFO consumption of M.E. 44.8 t/day
 Crew complement 34

The ship is designed for world wide service, suitable for carrying coal and ore. Cargo area consists of five holds. Self unloading system of the gravity flow type is arranged.

Cargo equipment:

- Hatch covers of side-rolling type, hydraulically operated.
- Self unloading system of the gravity flow type, 500 t/h and 400 m³/h.
- The conveying system as follows:
 2 cargo hold conveyors,
 2 cargo hold transfer conveyors,
 1 lift conveyor (flexolift type).
 1 boom conveyor with all hydraulic slewing and luffing equipment.

Steam plant:

- One oil fired boiler, 1.8 t/h steam.
- One economizer, 1.2 t/h steam.

Auxiliary engines plant:

- Three diesel generator sets, 960 kVA.
- One emergency diesel generator, 150 kVA.